

4



4



226m²

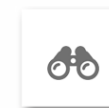
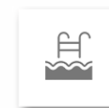


1080m²

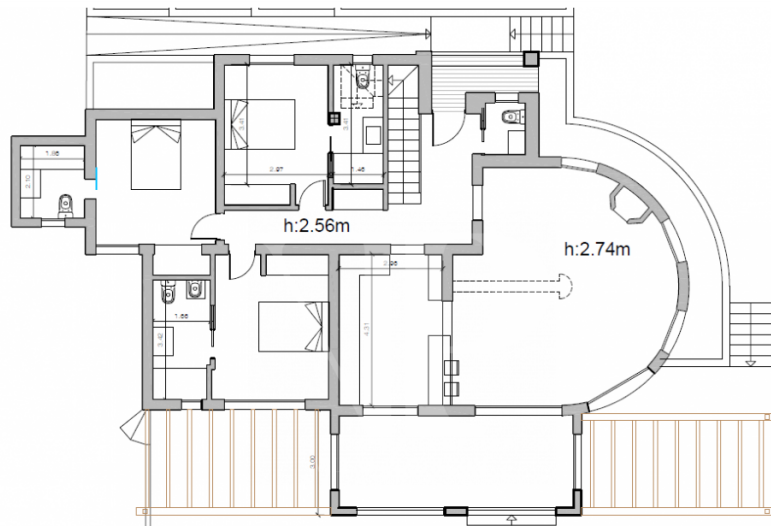
Ref: 007815

2,195,000 €

Ambolo - Granadella (Javea)

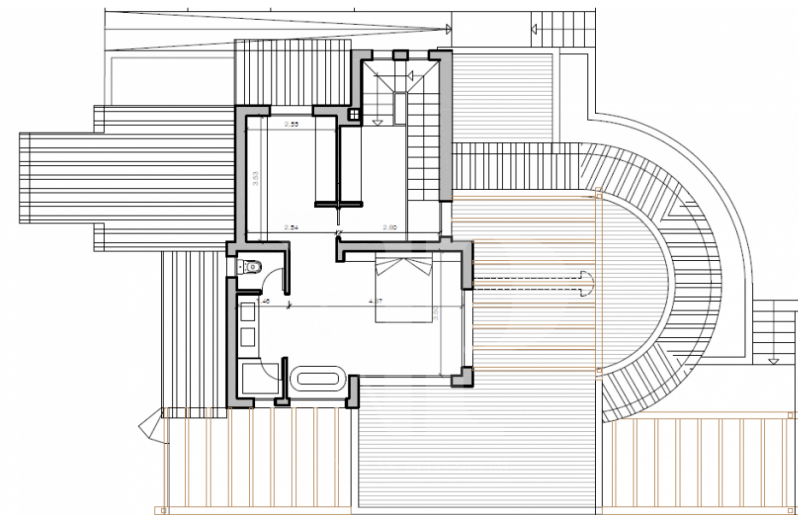


Boasting expansive south facing sea-views, the beautiful 'Ca Lola' is an authentic Mediterranean design villa bathed in natural light offering stunning views spanning from Ambolo to the bay of Granadella. This fully furnished energy efficient luxurious 4 suite property offers comfortable living combining the use of many natural local materials to stunning effect. With easy access to the main living level, the pool area flows effortlessly out from same level as the gorgeous bright open plan living area and covered terrace with Savina wooden pergolas. On the ground floor we have the generous sized lounge area possessing extensive glazing to enjoy the close up views of the glistening Mediterranean Sea. Here we also have the open kitchen with American type bar, both leading to the covered terrace, all strategically designed for comfort and to maximise the views ahead. On this floor we also find the three guest suites and guest toilet. On the upper floor there is the stunning large master suite with a vast private terrace. Featuring an independent dressing room decked in oak carpentry, this fabulous suite boasts an open freestanding bath taking in the breath-taking vista, the perfect place to relax and unwind. The automatic curtains open up to reveal the spectacular front line type views from the king sized bed. Set for completion summer 2024 this outstanding home is sold 'Turn-key' fully furnished, comprehensively equipped, and beautifully landscaped in a low maintenance Mediterranean design by a renowned local landscape artist.



	EXISTENTE	AMPLIACION	TOTAL CONSTRUIDO	TOTAL COMPUTABLE
PLANTA BAJA				
PORCHE	3,42 m ²		3,27 m ²	1,64 m ²
VIVIENDA	137,76 m ²	6,30 m ²	144,06 m ²	144,06 m ²
NAYA	24,82 m ²		20,5 m ²	10,25 m ²
PLANTA ALTA				
VIVIENDA	58,01 m ²		58,01 m ²	58,01 m ²
	166,00 m²	64,31 m²	225,84 m²	213,955 m ²

PLANTA BAJA
V2



	EXISTENTE	AMPLIACION	TOTAL CONSTRUIDO	TOTAL COMPUTABLE
PLANTA BAJA				
PORCHE	3,42 m ²		3,27 m ²	1,64 m ²
VIVIENDA	137,76 m ²	6,30 m ²	144,06 m ²	144,06 m ²
NAYA	24,82 m ²		20,5 m ²	10,25 m ²
PLANTA ALTA				
VIVIENDA	58,01 m ²		58,01 m ²	58,01 m ²
	166,00 m²	64,31 m²	225,84 m²	213,955 m ²

PLANTA ALTA
V2