

Con licencia de construcción



3



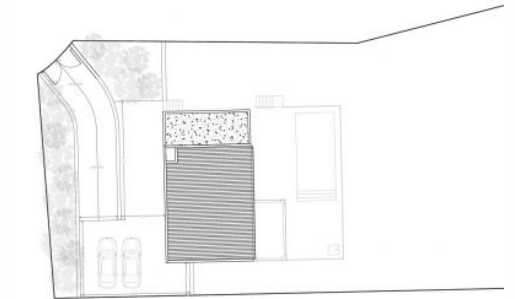
2



419m²



1021m²



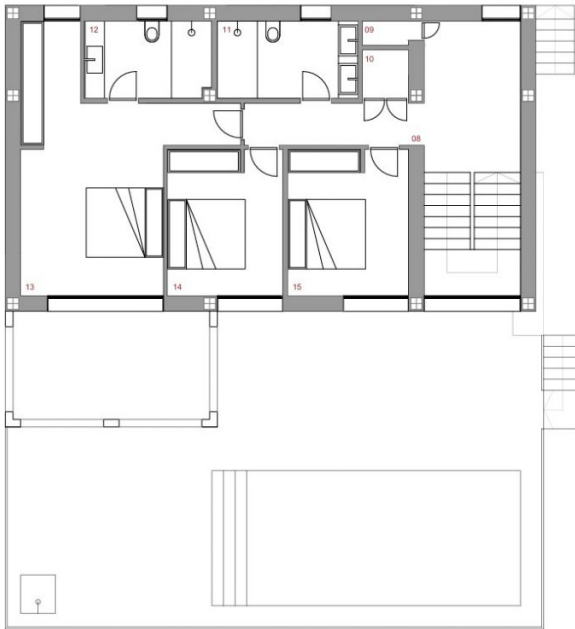
Ref: 0012052937

765,000 €

Benarossa Gardens (Alcalali)



Located in the idyllic village of Alcalalí, this new build project has been granted planning permission. With a planned built area of 211 m² on a generous plot of 1,021 m², this project offers the opportunity to build a beautiful Ibiza-style villa in the peaceful, natural surroundings of the Jalón Valley. The project envisages a villa that will be built over two floors. On the ground floor, a spacious living-dining room is planned with an open kitchen equipped with a cooking island, complemented by a pantry, storage space and a guest toilet. The upper floor is designed with three comfortable bedrooms and two stylishly designed bathrooms that combine functionality and aesthetics, one of which is en-suite. The layout of the project has been carefully designed to ensure optimal use of space and to create a natural flow between the different living areas. In addition, the private garden has been designed to allow you to enjoy the outdoors and nature in complete privacy, as well as two terraces where you can experience the Mediterranean climate all year round. There is also an 8 x 4 metre swimming pool, ideal for cooling off during the hot summer months. The outdoor areas will consist of both an open terrace and a covered terrace, so there is always a choice between sun and shade. The plot will be fully fenced, ensuring security and peace of mind, while good connections to nearby main roads guarantee easy access to local amenities and attractions. The villa will be equipped with air conditioning for heating and cooling via air ducts, creating a pleasant indoor climate in every room, regardless of the season. Double glazing, automatic shutters in the bedrooms and the provision of parking and storage space contribute to additional living comfort. This project represents not only the realisation of a home, but a lifestyle in which tranquillity, comfort and modern luxury come together in charming Alcalalí. With its contemporary architecture and thoughtful amenities, this project is an invitation to enjoy an exceptional living environment every day, where time seems to stand still.



PLANTA BAJA	SUP. ÚTIL
08	12.13 m²
09	2.13 m²
10	2.13 m²
11	2.13 m²
12	2.13 m²
13	2.13 m²
14	2.13 m²
15	2.13 m²
16	2.13 m²
17	2.13 m²
18	2.13 m²
19	2.13 m²
20	2.13 m²
21	2.13 m²
22	2.13 m²
23	2.13 m²
24	2.13 m²
25	2.13 m²
26	2.13 m²
27	2.13 m²
28	2.13 m²
29	2.13 m²
30	2.13 m²
31	2.13 m²
32	2.13 m²
33	2.13 m²
34	2.13 m²
35	2.13 m²
36	2.13 m²
37	2.13 m²
38	2.13 m²
39	2.13 m²
40	2.13 m²
41	2.13 m²
42	2.13 m²
43	2.13 m²
44	2.13 m²
45	2.13 m²
46	2.13 m²
47	2.13 m²
48	2.13 m²
49	2.13 m²
50	2.13 m²
51	2.13 m²
52	2.13 m²
53	2.13 m²
54	2.13 m²
55	2.13 m²
56	2.13 m²
57	2.13 m²
58	2.13 m²
59	2.13 m²
60	2.13 m²
61	2.13 m²
62	2.13 m²
63	2.13 m²
64	2.13 m²
65	2.13 m²
66	2.13 m²
67	2.13 m²
68	2.13 m²
69	2.13 m²
70	2.13 m²
71	2.13 m²
72	2.13 m²
73	2.13 m²
74	2.13 m²
75	2.13 m²
76	2.13 m²
77	2.13 m²
78	2.13 m²
79	2.13 m²
80	2.13 m²
81	2.13 m²
82	2.13 m²
83	2.13 m²
84	2.13 m²
85	2.13 m²
86	2.13 m²
87	2.13 m²
88	2.13 m²
89	2.13 m²
90	2.13 m²
91	2.13 m²
92	2.13 m²
93	2.13 m²
94	2.13 m²
95	2.13 m²
96	2.13 m²
97	2.13 m²
98	2.13 m²
99	2.13 m²
100	2.13 m²
TOTAL PROYECTO	100.00 m²

